



jo luping

design

Catalogue August 2011



The JLD Story

Jo Luping Design produces art pieces such as ceramics, jewellery, prints and textiles that possess unique, endearing characteristics. They are dramatic and intelligent and reflect the natural environment that we live in. Inspiration is drawn from the land and sea. Jo is inspired by the Japanese aesthetic “wabi-sabi”. The characteristics of wabi-sabi aesthetic include simple elegance, intimacy, modesty and suggest a natural process.



Jo Luping studied printmaking and photography at the Otago Fine Art School, then film making and design at Wellington’s Victoria University. She established her studio in 1996 and became renowned for her ceramics, which capture New Zealand’s coastal landforms and indigenous flora and fauna. She works in a variety of mediums including jewellery, ceramics, glass, print-making, textiles, photography and film. She lives in Wellington with her gorgeous husband Aaron and delightful daughter Bella.

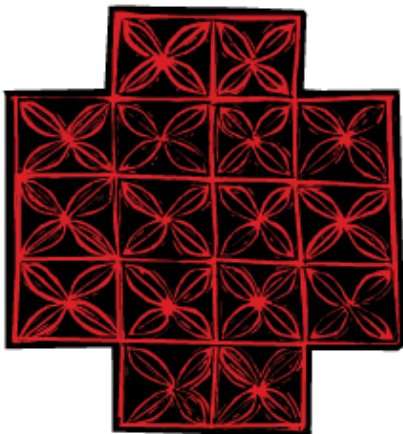




Contents



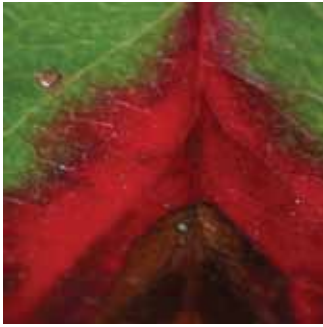
Page 4	“Seasons” A Collection of Porcelain Design Objects
Page 5	Porcelain Candleholders
Page 6	R+B Collection
Page 8	Porcelain Tableware
Page 10	Porcelain Tiles
Page 12	Porcelain and Ceramic Jewellery
Page 14	Bronze Jewellery
Page 16	Vesch Jewellery
Page 18	Screenprints
Page 20	Open Edition Prints
Page 22	Wall Vinyls
Page 24	Behind the Scenes





“Seasons”

A Collection of Porcelain Objects



*“Winter is an etching,
spring a watercolour,
summer an oil painting
and autumn a
mosaic of them all.”*

Stanley Horowitz



Porcelain Vessel

Dimensions: 85mm (Width) x 110mm (Height)



CV85x110-MY
Matte Yellow



CV85x110-AP
Apricot



CV85x110-DR
Deep Red



CV85x110-GS
Granny Smith



CV85x110-TQ
Turquoise

Porcelain Bowls 120

Dimensions: 120mm (Diam) x 60mm (Height)



CB120-MY
Matte Yellow



CB120-AP
Apricot



CB120-DR
Deep Red



CB120-GS
Granny Smith



CB120-TQ
Turquoise

Porcelain Bowls 180

Dimensions: 180mm (Diam) x 90mm (Height)



CB180-MY
Matte Yellow



CB180-AP
Apricot



CB180-DR
Deep Red



CB180-GS
Granny Smith



CB180-TQ
Turquoise



Porcelain Candleholders



Porcelain Candle Holders
Dimensions: 120mm (Diam) x 80mm (Height)

This collection of porcelain candleholders are so finely made that they become translucent when a candle is placed inside and the fine carving is illuminated. There are three stories within the collection that feature New Zealand Maori symbols. The Triple Twist design depicts the collaboration or joining together of two cultures or two people for eternity. The Koru symbolises new growth, new beginnings and harmony. The Harakeke represents the importance of family as it is traditional to use the outer flax or harakeke leaves when weaving, leaving the inner leaves (mokopuna or grandchildren) protected.



PCAND-TT
Triple Twist



PCAND-K
Koru



PCAND-H
Harakeke



GLV - Glass Votive

Candle options:

- CAND - LG Lemongrass
- CAND - FP French Pear
- CAND - LS Lemongrass + Sandalwood



“R + B Collection”

Jo Luping’s Finearts background in printmaking comes through in this series of work. She has carved two ranges within the Red and Black Collection. The first depicts a series of iconic New Zealand and Australian Flowers. The New South Wales Waratah, the Manuka and the Pohutukawa flowers were chosen for their strong and dramatic forms.

The second range of designs are influenced by Pacific motifs and feature a Cross with a “pacific lace”, a circle with Koru interior and a Heart also with a koru interior. The Maori word for love is Aroha and the koru represents growth and new beginnings.



Woodcut of the Waratah.



Flower Series



Porcelain wall hangings featuring the Pacific Series.



Pacific Series

Pacific Collection: Porcelain Vessels
 Dimensions: 85mm (Width) x 110mm (Height)



CVES85x110-RBPL Pacific Lace
 CVES85x110-RBA Aroha
 CVES85x110-RBK Koru

Pacific Collection: Porcelain Bowls 90mm
 Dimensions: 90mm (Diam) x 50mm (Height)



CB90-RBPL Pacific Lace
 CB90-RBA Aroha
 CB90-RBK Koru

Porcelain Tiles Medium 100. Dimensions: 100x100mm



CT100-RBPL Pacific Lace
 CT100-RBA Aroha
 CT100-RBK Koru
 Packaged Porcelain 100 Pacific Lace

Porcelain Tiles Touchstones. Dimensions: 50x50mm



CTTRIP50 - RBPAC
 CT50-RBPL Pacific Lace
 CT50-RBK Koru
 CT50-RBA Aroha

R+B Iconic Flowers Collection: Porcelain Vessels
 Dimensions: 85mm (Width) x 110mm (Height)



CVES85x110-RBP Pohutukawa
 CVES85x110-RBM Manuka
 CVES85x110-RBW Waratah



CB90-RBPPohutukawa
 CB90-RBM Manuka
 CB90-RBW Waratah

Porcelain Tiles Medium 100.
 Dimensions: 100x100mm



CT100-RBP Pohutukawa
 CT100-RBM Manuka
 CT100-RBW Waratah

Porcelain Tiles Touchstones. Dimensions: 50x50mm



CTTRIP50 - RBFLO
 CT50-RBP Pohutukawa
 CT50-RBM Manuka
 CT50-RBW Waratah

Porcelain Tableware



Each piece in this collection is lovingly handcrafted in our studio using the finest quality porcelain clay and glazed with a food safe glaze so you can gain pleasure from both form and function. The organic nature of the series is due to the labour intensive method of hand cutting and molding. No two pieces will be the same. Although the collection is made to be used as dipping dishes, vases or teacups, plates and bowls, it is best to hand wash each piece and avoid the microwave oven. The designs feature a series of line drawings of New Zealand and Australian flora and fauna. The aim has been to capture the essence and personality of the birds, thus we have a cheeky Fantail and a slightly sassy, arrogant Tui.



Porcelain Bowl Large
Dimensions: 240mm (Diam.) x 50mm (Height)



CB240-D Dragonfly



CB240-FC Fantail Cheeky



CB240-MB Manuka Branch



CB240-TH Tui Head

Porcelain Plate Medium
Dimensions: 200mm (Diam.) x 25mm (Height)



CP200-D Dragonfly



CP200-FC Fantail Cheeky



CP200-MB Manuka Branch



CP200-TH Tui Head

Porcelain Vessel
Dimensions: 85mm (Width) x 110mm (Height)



CVES85x110-D Dragonfly



CVES85x110-F Fantail



CVES85x110-MB ManukaBand



CVES85x110-TH Tui Head

Porcelain Bowl Medium
Dimensions: 90mm (Diam.) x 50mm (Height)



CB90-BUT Butterfly



CB90-CAB Cabbage Tree



CB90-D Dragonfly



CB90-FC Fantail Cheeky



CB90-FLX Flax Seed



CB90-KOW Kowhai



CB90-MAN Manuka Flower



CB90-TH Tui Head

Porcelain Bowl Triple Sets 90mm



CBTRIP90-FAU Porcelain Bowl Triple Set 90mm Fauna



CBTRIP90-FAV Porcelain Bowl Triple Set 90mm Hot Favourites 2010



CBTRIP90-VES Porcelain Bowl Triple Set 90mm Vesch



Porcelain Tiles



A collection of miniature wall art plaques that can be collected and hung on the wall. Each piece is embossed or decorated with designs that feature botanical and environmental themes. The selection of birds is part of a series which highlights the importance of sanctuaries for maintaining endangered bird populations. The botanicals chosen are a mixture of New Zealand and Australian plants. The insect series was designed by Jasmin van Lith for JLD Haus, a concept to give emerging designers a platform to produce their own designs.



Wall Art

Easy to hang on wall

Dimensions:
50mm x 50mm x 14mm



Spring
 CT50-SFSP Silverfern CT50-TFSP Tree Fern CT50-KOWSP Kowhai CT50-GUMSP Gum Tree CT50-4LSP Four Leaf CT50-PAUSP Paua



Turquoise
 CT50-SFTQ Silverfern CT50-TFTQ Tree Fern CT50-KOWTQ Kowhai CT50-GUMTQ Gum Tree CT50-4LTQ Four Leaf CT50-PAUTQ Paua



Stone
 CT50-SFST Silverfern CT50-FFST Fernfrond CT50-KOWST Kowhai CT50-POHST Pohutukawa



Decals
 CT50-TUI Tui CT50-FAN Fantail CT50-HER White Heron CT50-BUT Butterfly CT50-CIC Cicada CT50-MOT Moth



CT50-MAN Circle Manuka CT50-BLO Circle Blossom CT50-KAN Circle Kanuka CT50-FLX Circle Flax Seed CT50-CAB Circle Cabbage Tree CT50-KOW Circle Kowhai



CT50-RAG01 Raglan Cabbage Tree CT50-RAG02 Raglan Estuary CT50-RAG03 Raglan Manuka Tree

Triple Sets



CTTRIP50-001 Triple Touchstone Raglan



CTTRIP50-002 Triple Touchstone Flora - Spring CTTRIP50-003 Triple Touchstone Flora - Turquoise CTTRIP50-004 Triple Touchstone Pacific - Spring



CTTRIP50-005 Triple Touchstone Pacific - Turquoise CTTRIP50-006 Triple Touchstone Sanctuary CTTRIP50-007 Triple Touchstone Flora - Stone



CTTRIP50-008 Triple Touchstone Insect CTTRIP50-009 Triple Touchstone Vesch CTTRIP50-010 Triple Touchstone Flower

JLD Porcelain and Ceramic Jewellery



Adjustable rings



This collection of ceramic jewellery is inspired by the smooth round organic shaped pebbles found on Makara beach on Wellington's West Coast. Each piece is made from naturally coloured stoneware clay, formed into ceramic pebbles and hand bound.

The porcelain collection of jewellery features line drawings of Australian and New Zealand Fauna. The earrings and pendants incorporate Sterling Silver findings and the ring has been cast out of Bronze.

Inspiration



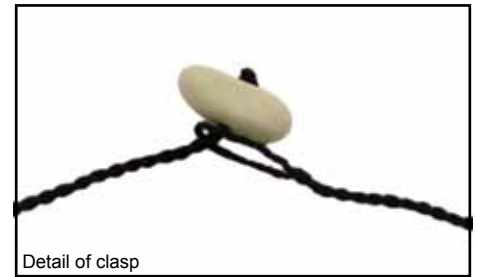
Ceramic and Porcelain Jewellery



JCN-RR
Necklace Ceramic Riverbed
Black Waxed Cord



JCN-RD
Necklace Ceramic Riverbed Drop
Black Waxed Cord



Detail of clasp



JPE20-D Porcelain Earrings
20mm Dragonfly



JPE20-FR Porcelain Earrings
20mm Fantail Red



JPE20-MBR Porcelain Earrings
20mm Manuka Branch Red



JPE20-TH Porcelain Earrings
20mm Tui Head



JPR30-D Porcelain Ring
Circle 30mm Dragonfly



JPR30-FR Porcelain Ring
Circle 30mm Fantail Red



JPR30-MBR Porcelain Ring
Circle 30mm Manuka Branch Red



JPR30-TH Porcelain Ring
Circle 30mm Tui Head

JPN36-D Porcelain Necklace
Circle 36mm Dragonfly



JPN36-FR Porcelain Necklace
Circle 36mm Fantail Red



JPN36-MBR Porcelain Necklace
Circle 36mm Manuka Branch Red



JPN36-TH Porcelain Necklace
Circle 36mm Tui Head



Porcelain Brooches. Dimensions: 60mm



JPB60-RBW
Waratah



JPB60-RBP
Pohutukawa



JPB60-RBM
Manuka



JPB60-RBK
Koru



JPB60-RBA
Aroha

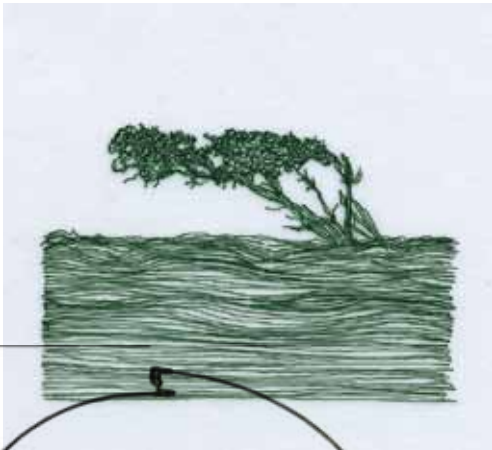


JPB60-RBPL
Aroha



Bronze Jewellery

This Christmas Jo has designed a range of bronze jewellery that feature line drawings reminiscent of an etching. Once again drawing on her background as a fine artist the emphasis has been placed on wearable works of art. Many of the pieces in the collection have additional features such as the ability to wear the brooches as pendants on a variety of



The 30mm Pendant worn on this stainless steel wire has the ability to be worn both as a brooch as well as on other necklaces such as this



Different sized pendants are available from delicate through to chunkier statement pieces. The 50mm pendant is also able to be worn as a brooch.



Adjustable ring shanks remove the problem of ring sizes

Bronze Pendant/Brooch 50mm



JBP50-WW
Winter winds



JBP50-SD
Summer Drought



JBP50-RS
Red Sky



JBP50-BC
Blue China



JBP30-WW
Winter winds



JBP30-SD
Summer Drought



JBP30-RS
Red Sky



JBP30-BC
Blue China



JBR30-WW
Winter winds



JBR30-SD
Summer Drought



JBR30-RS
Red Sky



JBR30-BC
Blue China



JBP25-WW
Winter winds



JBP25-SD
Summer Drought



JBP25-RS
Red Sky



JBP25-BC
Blue China



JBE15-WW
Winter winds



JBE15-SD
Summer Drought



JBE15-RS
Red Sky



JBE15-BC
Blue China



JN45-BRON



JN50-BO8B



Vesch Jewellery Collection

Inspiration

Vesch is a Russian word that means a thing with a soul. Since its invention, photography has become the principle means of working the enchanting transformation when a mere object becomes a thing with a soul.
From *"Things: A Spectrum of Photography 1850-2007"*

Each piece is a miniature work of art and has been made from either 23K Yellow Gold Leaf or 14K White Gold Leaf which has been embedded in a Sterling Silver Casing. Stark, heavily contrasted images of plants and feathers have been incorporated on all the pieces using an early form of photography called photograms. This technique does not rely on a camera but instead uses light and the negative imprint of the plant or the feather.



Pendant is also a brooch



New Bronze Flax Black Collection

New works for this season include a bronze version of the most popular Vesch design the Flax Black. This comes in the 15mm earring, the 25mm fine pendant, the 30mm chunky style ring and brooch/pendant as well as the 50mm fine brooch/pendant.



JBR30-FB
Bronze Ring 30mm Flax Black



JBE25-FB Bronze Pendant
25mm

This design also comes in:

- JBE15-FB Bronze Earrings 15mm Flax Black
- JBR30-FB Bronze Ring 30mm Flax Black
- JBP30-FB Bronze Pendant/Brooch Flax Black
- JBP50-FB Bronze Pendant/Brooch Flax Black

Vesch Jewellery

Earrings 14K White Gold



JVEC10-CBW Vesch Earrings Circle 10mm Cabbage Tree Berry White



JVEC10-FB Vesch Earrings Circle 10mm Flax Black



JVEC10-FW Vesch Earrings Circle 10mm Flax White

Earrings 23K Yellow Gold



JVEC10-PFGB Vesch Earrings Circle 10mm Peacock Feather Gold+Black



JVEC10-PFGR Vesch Earrings Circle 10mm Peacock Feather Gold+Red



JVEC10-TKGR Vesch Earrings Circle 10mm Ti Kouka Gold+Red

Rings 14K White Gold



JVRC20-CBW Vesch Ring Circle 20mm Cabbage Tree Berry White



JVRC20-FB Vesch Ring Circle 20mm Flax Black



JVRC20-FW Vesch Ring Circle 20mm Flax White

Rings 23K Yellow Gold



JVRC20-PFGB Vesch Ring Circle 20mm Peacock Feather Gold+Black



JVRC20-PFGR Vesch Ring Circle 20mm Peacock Feather Gold+Red



JVRC20-TKGR Vesch Ring Circle 20mm Ti Kouka Gold+Red

Small Pendants 14K White Gold



JVPC15-CBW Vesch Small Pendant 15mm Cabbage Tree Berry White



JVPC15-FB Vesch Small Pendant 15mm Flax Black



JVPC15-FW Vesch Small Pendant 15mm Flax White

Small Pendants 23K Yellow Gold



JVPC15-PFGB Vesch Small Pendant 15mm Peacock Feather Black+Gold



JVPC15-PFGR Vesch Small Pendant 15mm Peacock Feather Gold+Red



JVPC15-TKGR Vesch Small Pendant 15mm Ti Kouka Gold+Red



Large Pendants 14K White Gold



JVPC50-CBW Vesch Large Pendant/ Brooch 50mm Cabbage Tree Berry White



JVPC50-FB Vesch Large Pendant/ Brooch 50mm Flax Black



JVPC50-FW Vesch Large Pendant/ Brooch 50mm Flax White



Large Pendants 23K Yellow Gold



JVPC50-PFGB Vesch Large Pendant/ Brooch 50mm Peacock Feather Gold+Black



JVPC50-PFGR Vesch Large Pendant/ Brooch 50mm Peacock Feather Gold+Red



JVPC50-TKGR Vesch Large Pendant/ Brooch 50mm Ti Kouka Gold+Red



Can be worn as a brooch or a pendant



JN45-SNAKE Necklace Sterling Silver Snake Chain 45cm



JN60-SNAKE Necklace Sterling Silver Snake Chain 60cm



JN55-BA Necklace Black Frosted Agate Bead 50cm



JN55-BO Necklace Black Onyx Bead (shiny) 50cm

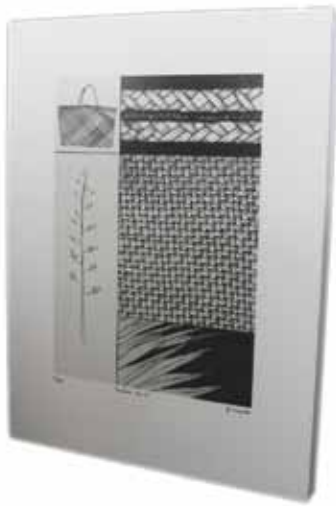


Limited Edition Prints



The print collections consist of a limited edition of hand printed drawings on stretched canvas featuring line drawings of flora, fauna and landscapes. Cardboard carry cases have been specifically designed to make transportation easy and to fully protect the artwork.

Limited Edition Prints



SPFK18-BK
Screenprint Harakeke Kete Black
406 x 610mm



SPFK18-R
Screenprint Harakeke Kete Red
406 x 610mm



SPFB18-BK
Screenprint Harakeke Black
406 x 610mm



SPFB18-RD
Screenprint Harakeke Red
406 x 610mm



SPAF18-BK
Screenprint Albatross Feather Black
406 x 610mm



SPAF18-R
Screenprint Albatross Feather Red
406 x 610mm



SPHF18-BK
Screenprint Huia Feather Black
406 x 610mm



SPHF18-RD
Screenprint Huia Feather Red
406 x 610mm



SPPP24
Screenprint Palms Plantation
610 x 610mm



SPTE24
Screenprint Toitū Estuary
610 x 610mm



SPNG24
Screenprint Nikau Grove
610 x 610mm

Open Edition Prints



An open edition selection of prints is available as 8x10" digital reproductions framed in acid free matt board. Gift packaging in the form of a smart black envelope is also available and can be easily branded for corporate orders.

Open Edition Prints 8x10



MPCP8X10
Matted Print Coastal Photograph



MPMP8X10
Matted Print Manuka Photograph



MPFBP8X10
Matted Print Flax Bush Photograph



MPKBLD8X10
Matted Print Kete Black Line Drawing



MPKRLD8X10
Matted Print Kete Red Line Drawing



MPHBLD8X10
Matted Print Harakeke Black Line Drawing



MPHRLD8X10
Matted Print Harakeke Red Line Drawing



MPWNP8X10
Matted Print West Coast Nikau Palms Oil Painting



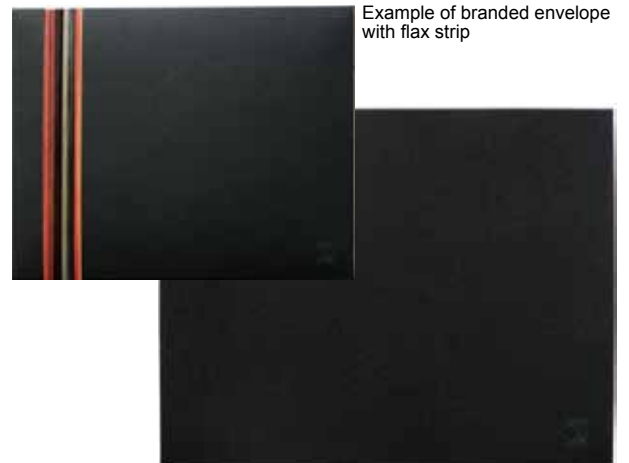
MPKOP8X10
Matted Print Kapiti Harakeke Oil Painting



MPSLLD8X10
Matted Print Seatoun Landscape Line Drawing



MPRNPLD8X10
Matted Print Raumati Nikau Palm Line Drawing



RMJLD-11
Matted Print Envelope



Wall Vinyls



A collection of wall graphic art to enhance any environment easily and cost effectively. This is the first collection of wall vinyls by Jo Luping Design and they feature line drawings of New Zealand and Australian flora and fauna. The vinyl stickers can be applied by anyone and will not leave any marks on your wall. There are a number of options to buy, either removable or permanent stickers.

Wall Vinyls



RMDIS-01A
Fantail 600 White
Opaque White Vinyl - permanent

RMDIS-01B
Fantail 600 White
Low Tac White Vinyl - removable



RMDIS-02
Fantail 600 Clear
Clear Vinyl - permanent



RMDIS-03A
Fantail 600 Red
Opaque White Vinyl - permanent

RMDIS-03B
Fantail 600 Red
Low Tac White Vinyl - removable



RMDIS-04
Tui 600 Clear
Clear Vinyl - permanent



RMDIS-05A
Tui 600 Red
Opaque White Vinyl - permanent

RMDIS-05B
Tui 600 Red
Low Tac White Vinyl - removable



RMDIS-06A
Dragonfly 600 White
Opaque White Vinyl - permanent

RMDIS-06B
Dragonfly 600 White
Low Tac White Vinyl - removable



RMDIS-07
Manuka and Bee 1200 Clear
Clear Vinyl - permanent





jo luping

design

PO Box 33243
Petone, Lower Hutt 5046, New Zealand
Ph: +64 4 973 5387, Fax: +64 4 973 5388
sales@jolupingdesign.com
www.jolupingdesign.com

